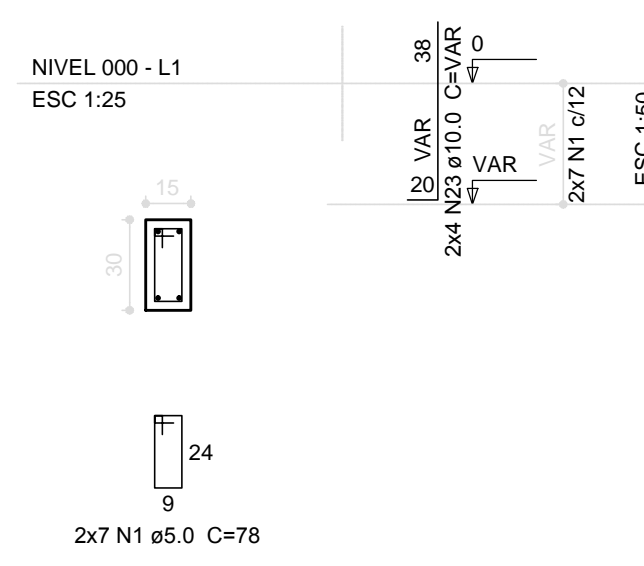
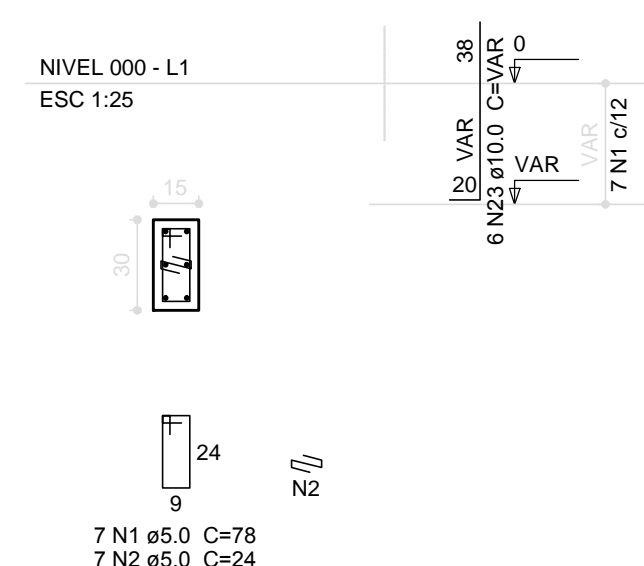


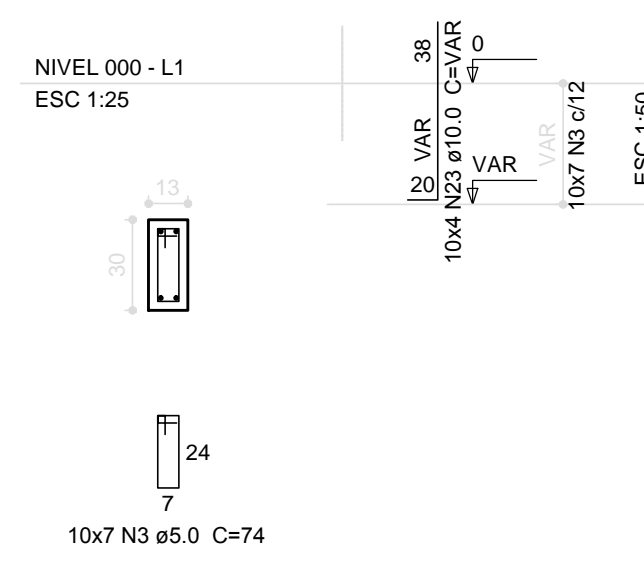
P58=P59



P61



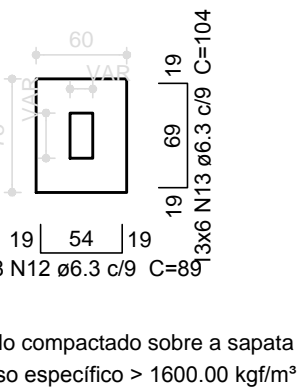
P69=P77=P81=P86=P90=P92=P93=P94=P99=P100



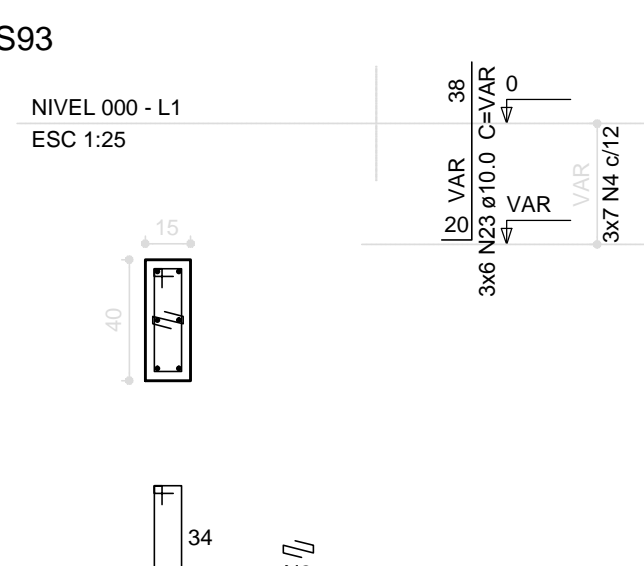
S58=S59=S61=S69=S77=S81=S86=S90=S92=S93=S94=S99=S100

PLANTA ESC 1:50

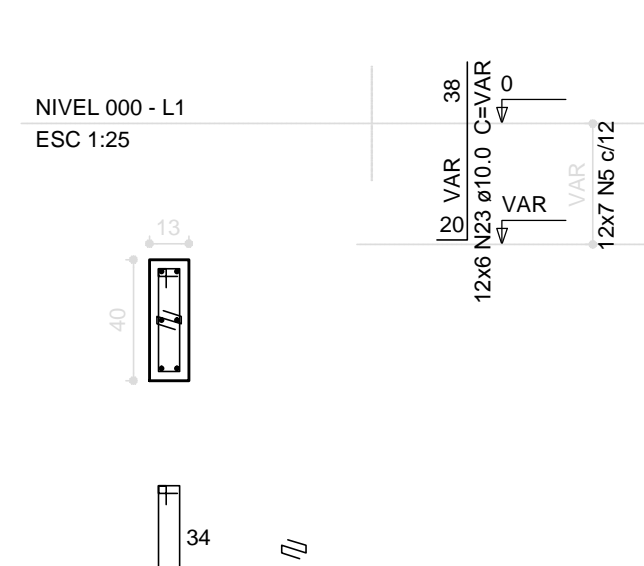
CORTE ESC 1:50



P12=P13=P60



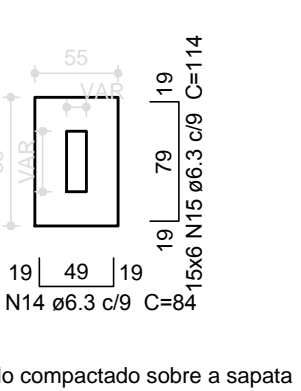
P20=P21=P71=P72=P79=P80=P82=P87=P88=P103=P104=P105



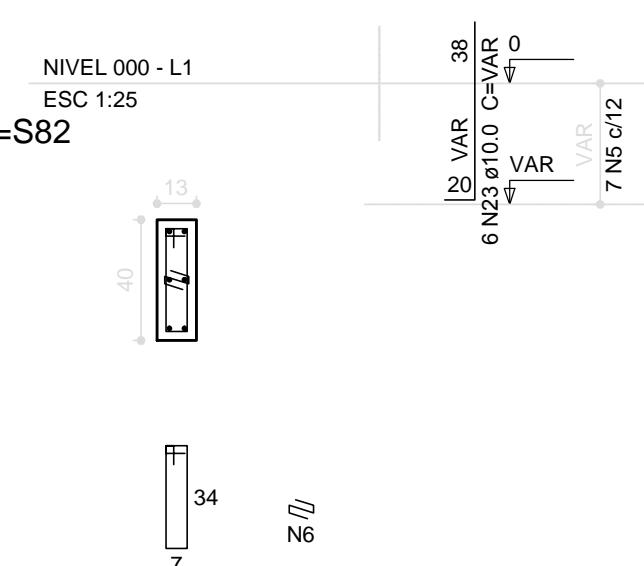
S12=S13=S20=S21=S60=S71=S72=S79=S80=S82=S87=S88=S103=S104=S105

PLANTA ESC 1:50

CORTE ESC 1:50



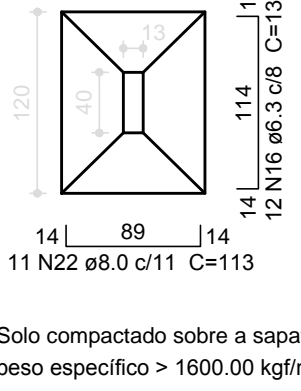
P65=P74=P75



S65=S74=S75

PLANTA ESC 1:50

CORTE ESC 1:50



Relação do aço

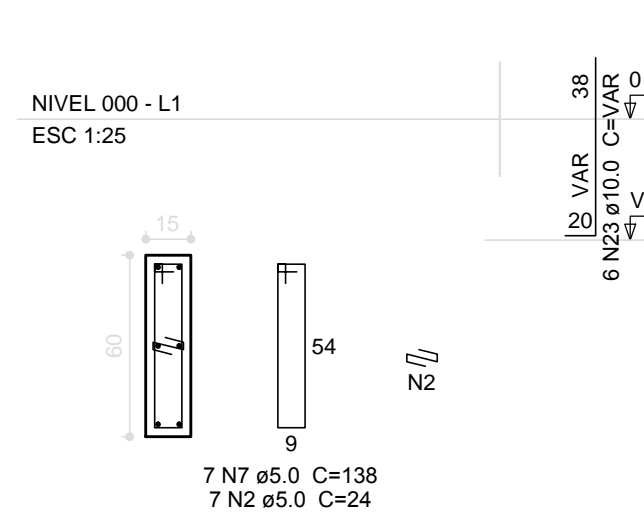
AÇO	N	DIAM (mm)	QUANT (Barras)	UNIT (cm)	C.TOTAL (cm)
CA60	1	5.0	28	78	2184
	2	5.0	357	24	8568
	3	5.0	77	74	5698
	4	5.0	28	98	2744
	5	5.0	196	94	18424
	6	5.0	203	22	4466
	7	5.0	7	138	966
	8	5.0	287	118	33866
	9	5.0	7	148	1036
	10	5.0	14	39	546
	11	5.0	21	22	462
	12	6.3	514	60	45748
	13	6.3	117	104	12168
	14	6.3	135	84	11340
	15	6.3	90	114	10280
	16	6.3	36	139	5004
	17	6.3	240	124	29760
	18	6.3	24	134	3216
	19	6.3	174	99	17226
	20	6.3	72	119	8568
	21	6.3	56	129	7224
	22	8.0	33	113	3729
	23	10.0	538	VAR	VAR
	24	12.5	20	VAR	VAR

Resumo do aço

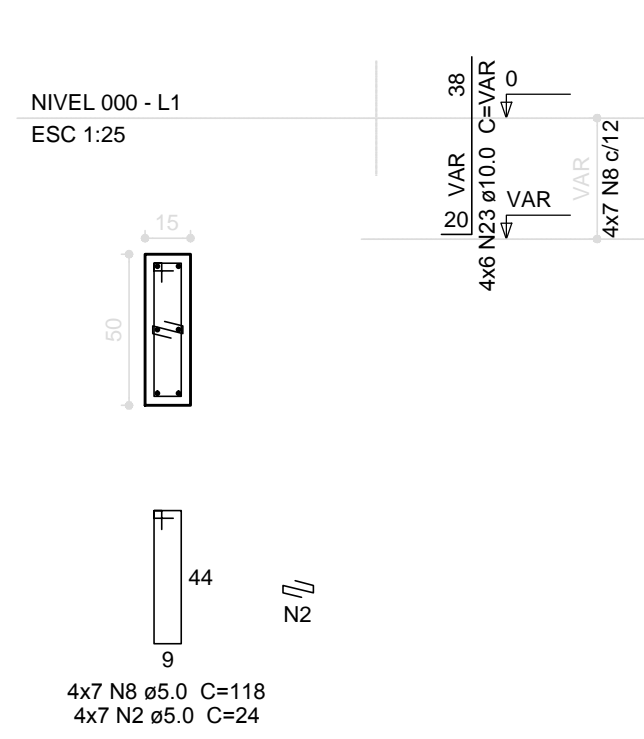
AÇO	DIAM (mm)	C.TOTAL (m)	PESO + 10% (kg)
CA50	6.3	1505.2	405.1
	8.0	37.3	16.2
	10.0	731.7	486.2
	12.5	28.8	30.5
CA60	5.0	789.6	133.9
PESO TOTAL (kg)			
CA50		948.1	
CA60		133.9	

Volume de concreto (C-25) = 17.47 m³  
Área de forma = 151.54 m²

P70



P76=P78=P89=P106



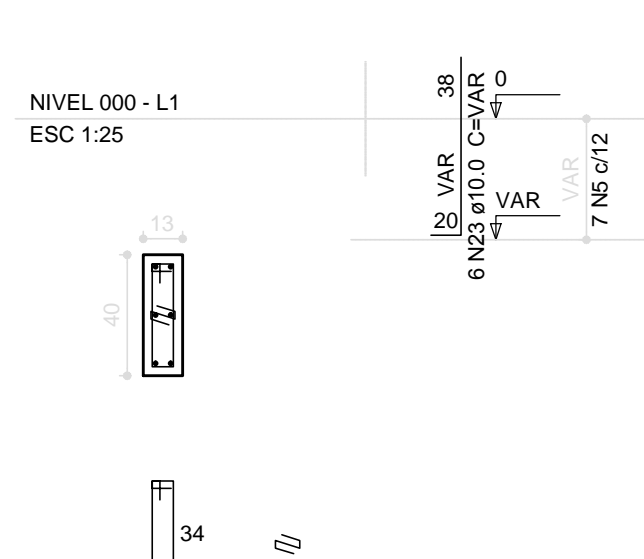
S70=S76=S78=S89=S106

PLANTA ESC 1:50

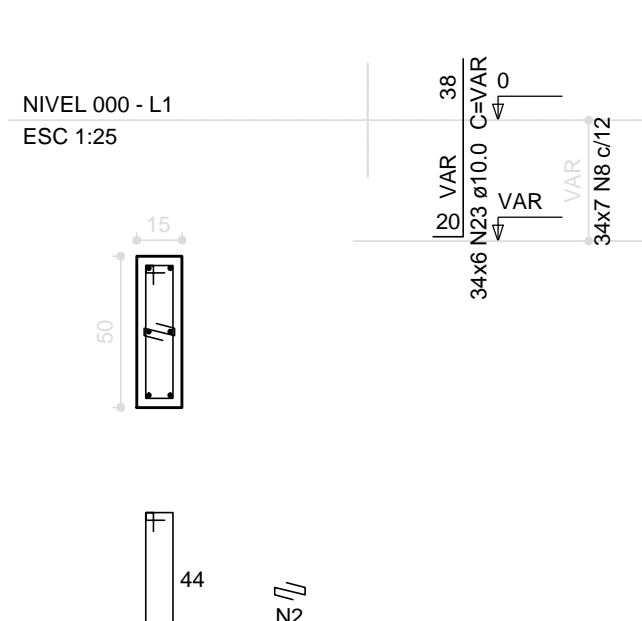
CORTE ESC 1:50



P30



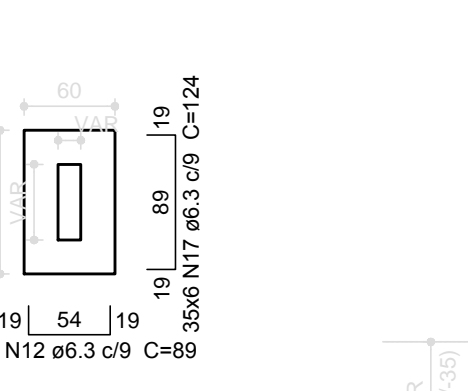
P1=P2=P3=P4=P5=P6=P7=P8=P41=P42=P43=P44=P45=P46=P47=P48=P49=P50=P51=P52=P53=P54=P55=P56=P57=P66=P107=P108=P109=P110=P111=P112=P113=P114



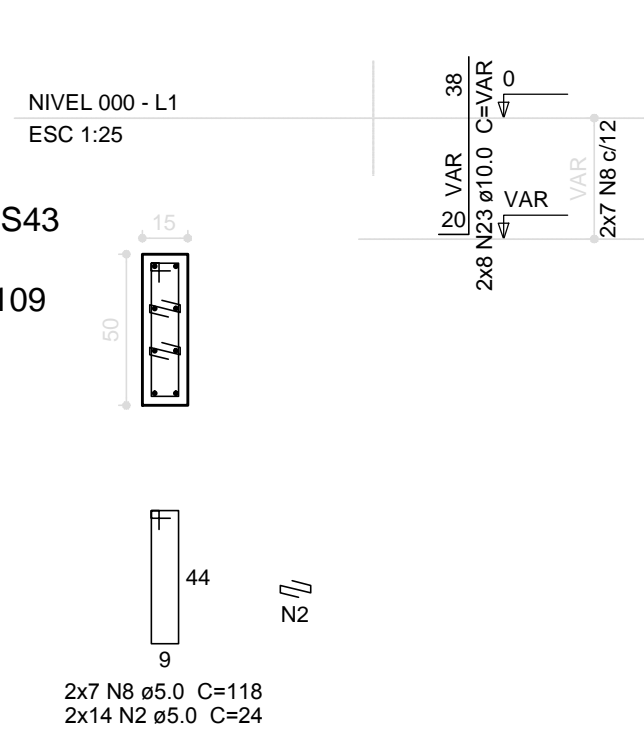
S1=S2=S3=S4=S5=S6=S7=S8=S30=S41=S42=S43=S44=S45=S46=S47=S48=S49=S50=S51=S52=S53=S54=S55=S56=S57=S66=S107=S108=S109=S110=S111=S112=S113=S114

PLANTA ESC 1:50

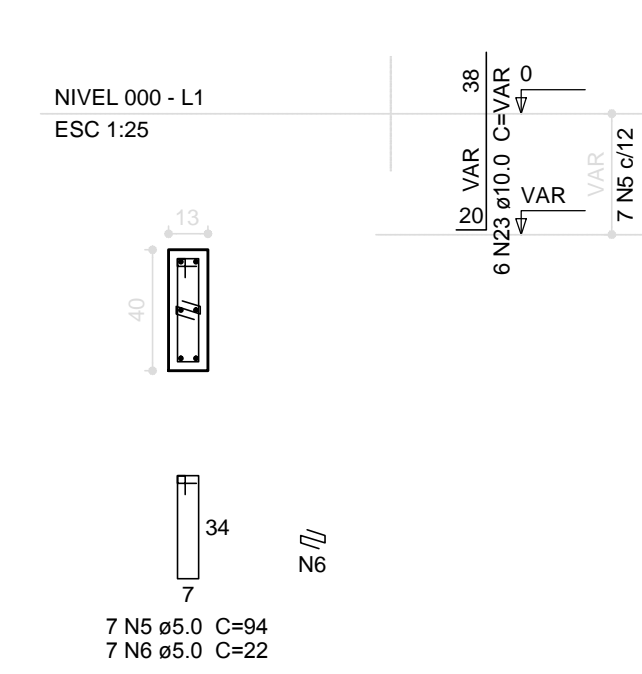
CORTE ESC 1:50



P9=P16



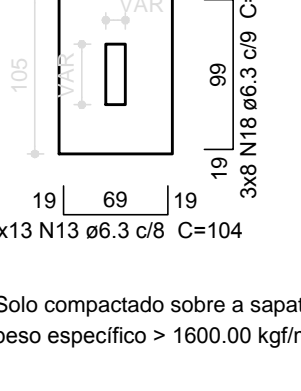
P35



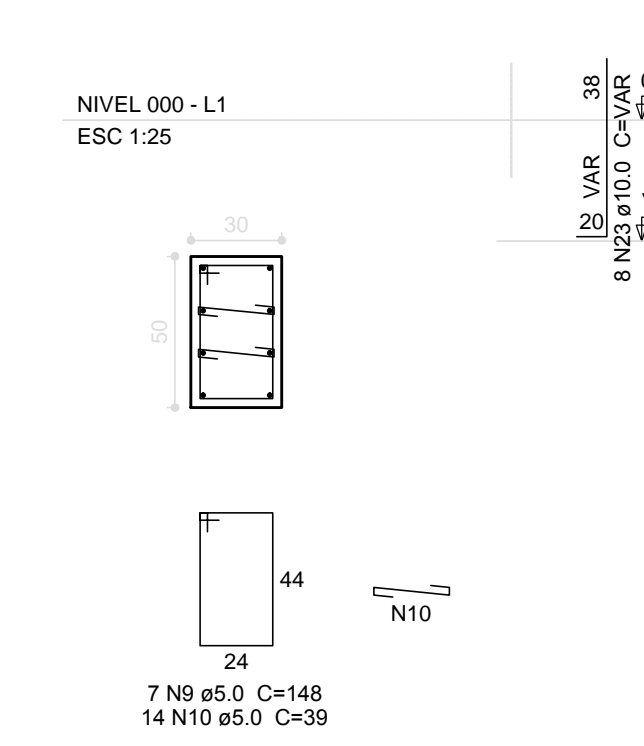
S9=S16=S35

PLANTA ESC 1:50

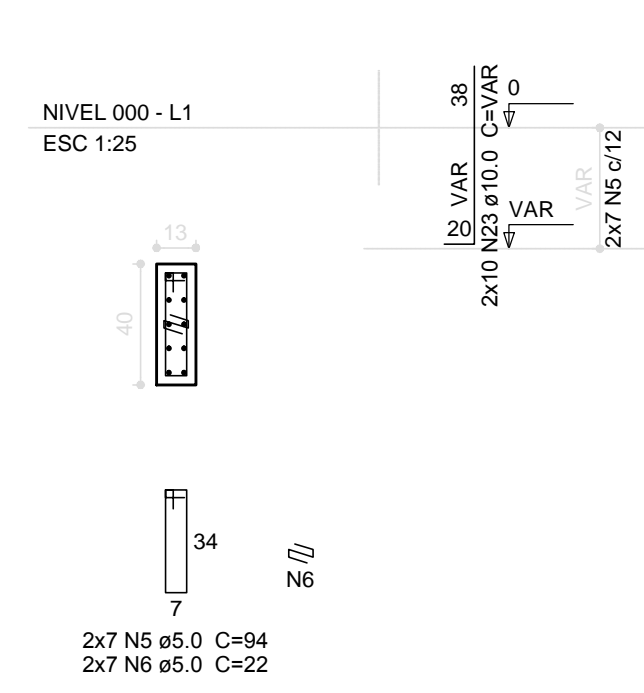
CORTE ESC 1:50



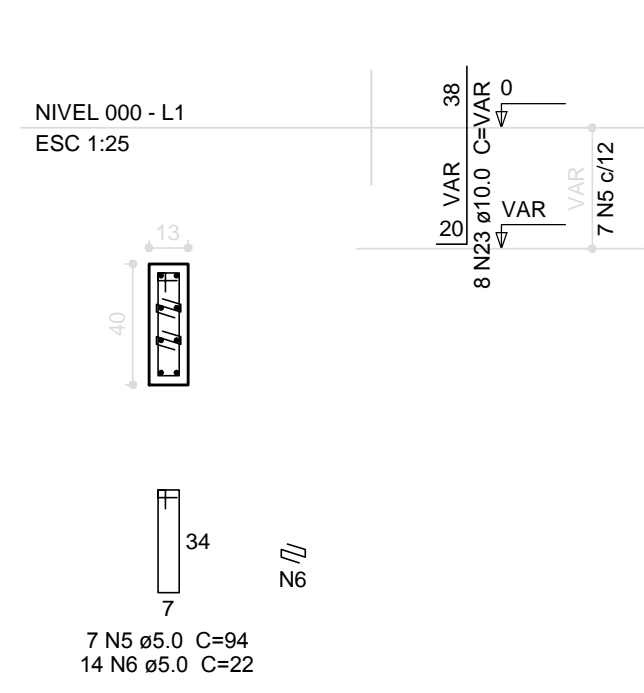
P102



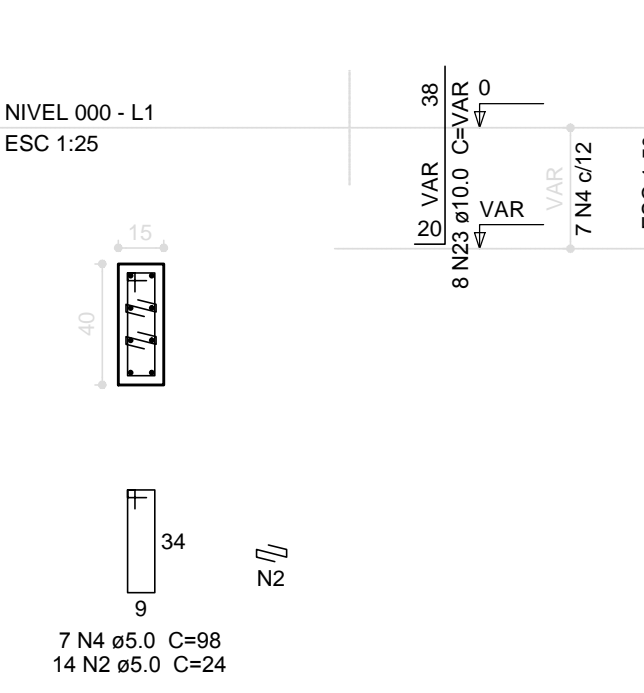
P28=P29



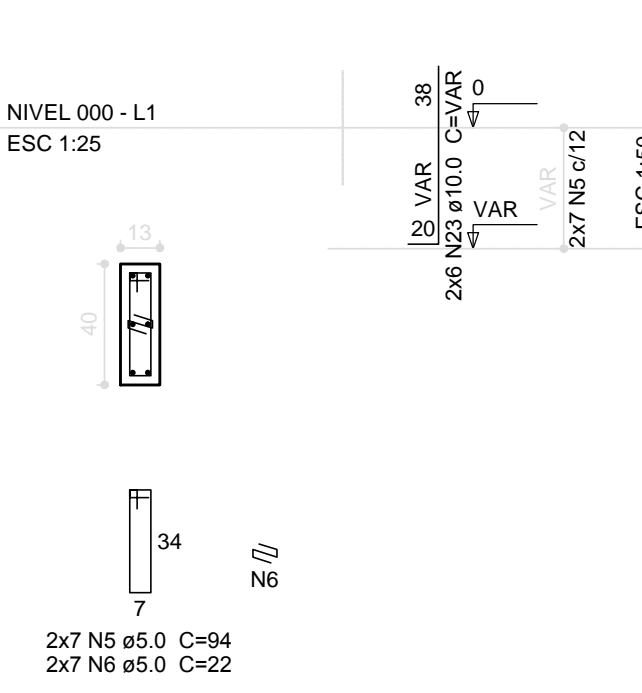
P31



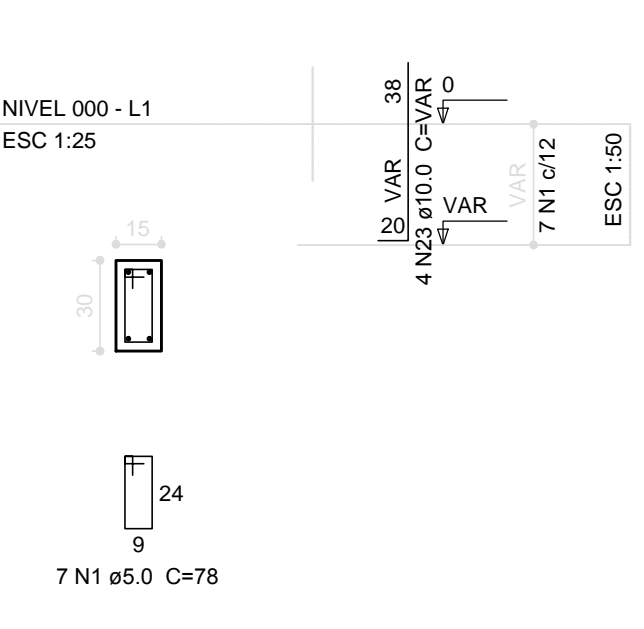
P33



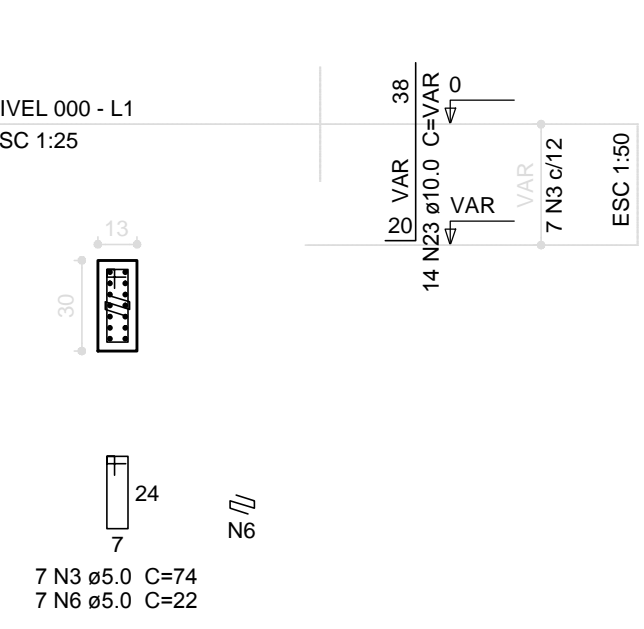
P38=P39



P85



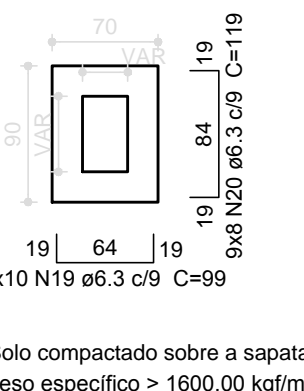
P91



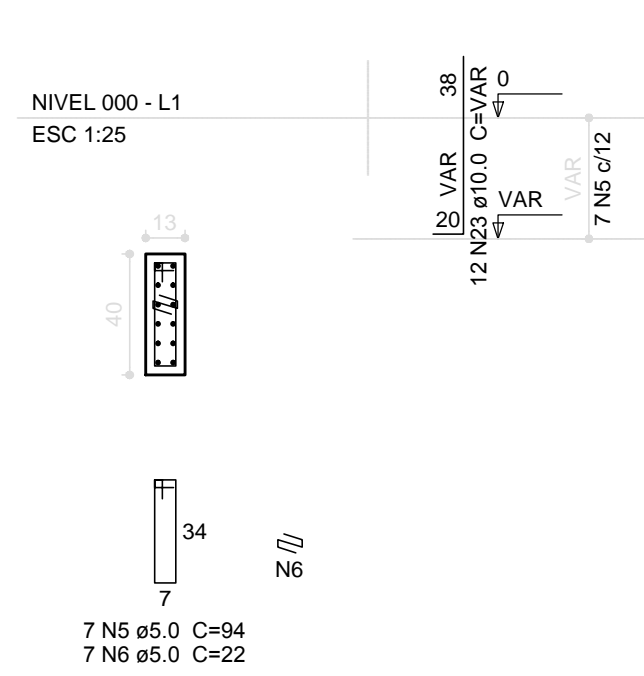
S28=S29=S31=S33=S38=S39=S85=S91=S102

PLANTA ESC 1:50

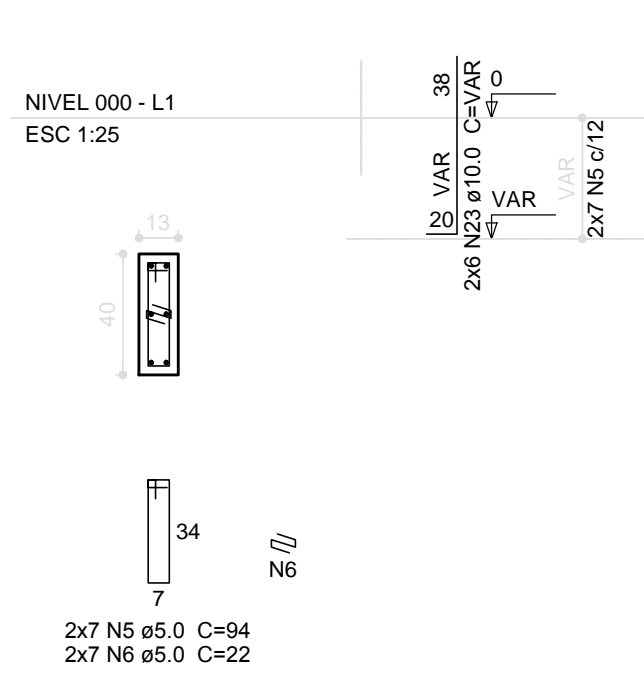
CORTE ESC 1:50



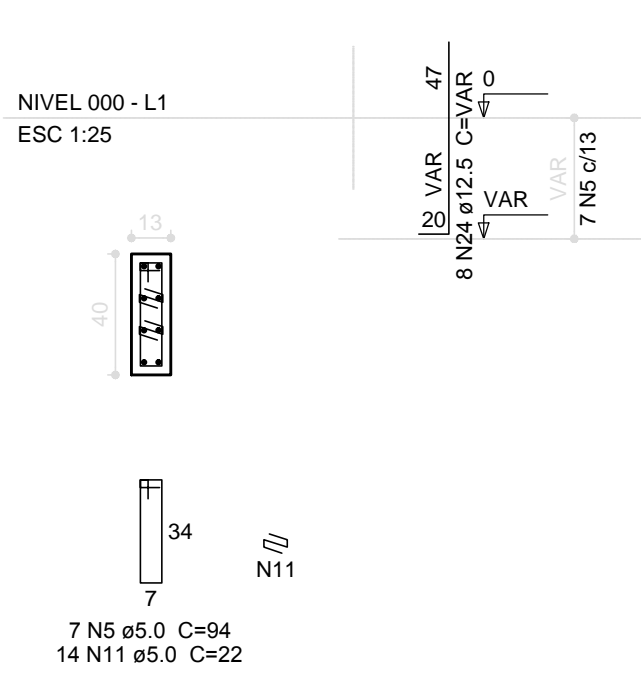
P18



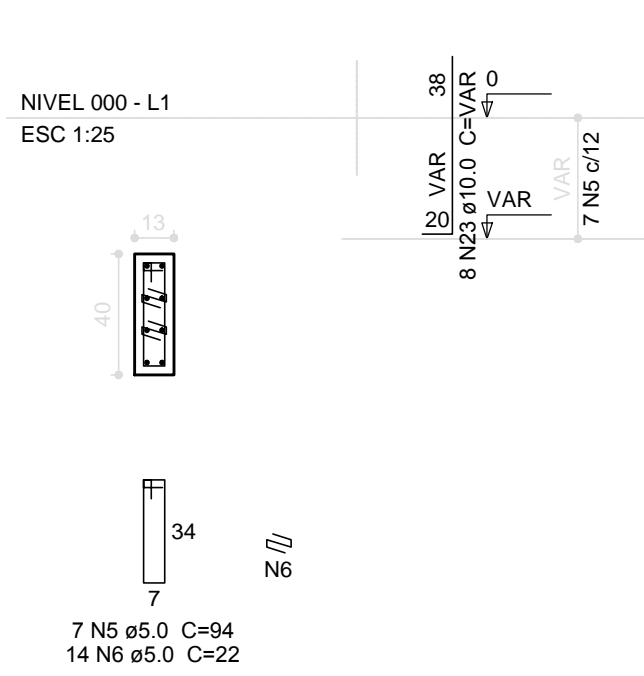
P19=P22



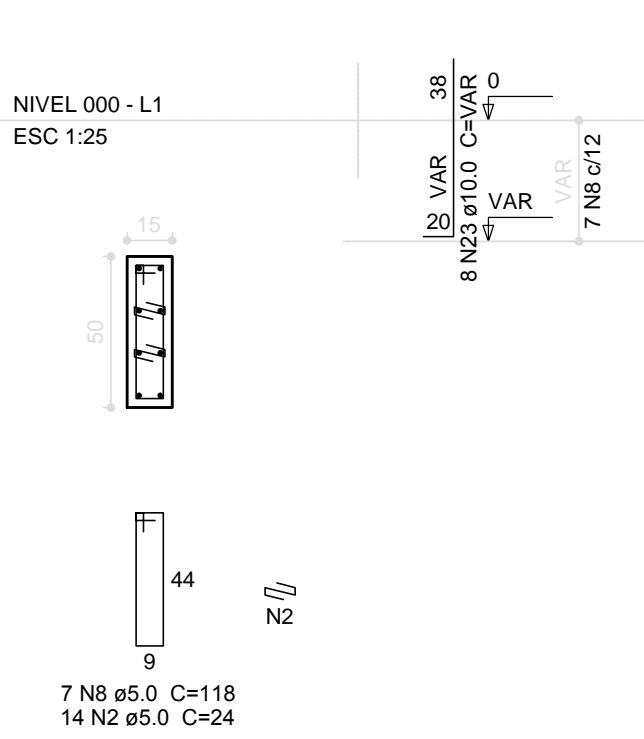
P23



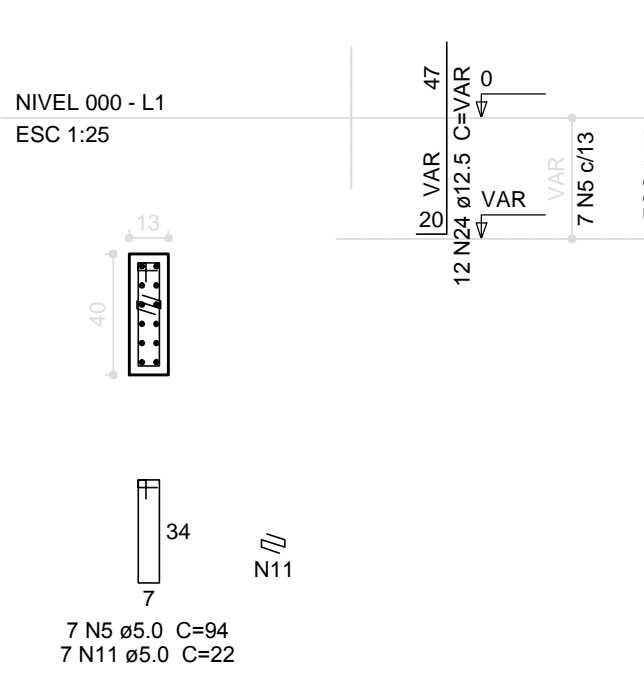
P26



P40



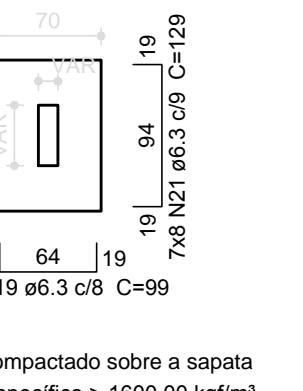
P63



S18=S19=S22=S23=S26=S40=S63

PLANTA ESC 1:50

CORTE ESC 1:50



PROJETO PADRÃO - FNE

PROPRIETÁRIO: \_\_\_\_\_

ENDEREÇO: \_\_\_\_\_

MUNICÍPIO - UF: \_\_\_\_\_

PROPRIETÁRIO \_\_\_\_\_

RESP. TÉCNICO \_\_\_\_\_ CREA \_\_\_\_\_

AUTOR DO PROJETO \_\_\_\_\_ CAU \_\_\_\_\_

DLFO \_\_\_\_\_ CREA \_\_\_\_\_

RA \_\_\_\_\_

OBSERVAÇÕES: \_\_\_\_\_

PROJETO EXECUTIVO

PROGRAMA PROINFÂNCIA - PROJETO TIPO 1

PROJETO DE ESTRUTURA

COORDENAÇÃO: CGEST - Coordenação Geral de Infraestrutura Educacional

OPÇÃO: FUNDAÇÃO SAPATAS  
DETALHAMENTO DE SAPATAS

SFN

REVISÃO: R.00

ESCALA: INDICADA

FRANCHA: 04/16

FORMATO: (1050x594)

DATA EMISSÃO: JUNHO/2015